


Welcome

Japanese Art History
ARTH 2071


2016 Research Paper Information



Schedule

- Tuesday Feb. 23 – Group #1 submits reports
- Tuesday April 5 – Group #2 submits reports
- Tuesday April 19 – Group #3 may submit reports if they want a chance to rewrite it.
- Thursday April 28 – Group #3 submits reports and all rewritten reports are due.


1 Research Paper Information



Helpful Hints

- Choose a type of artwork that you enjoy:
 - Painting
 - Sculpture
 - Graphic Design
 - Architecture
 - Textiles
 - Photography
- Consider something in the last two or three centuries because it's much easier to find research


2 Research Paper Information



Helpful Hints

- Check your textbook to find an artwork that appeals to you.
- Check some of the museums on the course web site.
- Check ahead to look at artwork in PowerPoint presentations for Chapters 2 - 7
- Make sure you can find the information identified on your checklist.


3 Research Paper Information



First, research notes

- On one page, include a digital image of the artwork that you are considering for your research paper.
- Identify the title, artist, date, materials and size plus the source of the artwork - museum or web site.
- Identify pages in the textbook that you'll use for contextual information and library books and web sites.

4 Research Paper Information



Next: Outline

- The checklist is the outline of your paper.
- You should find information for each point in the contextual analysis and include a sentence summarizing the facts that you found.
- The formal analysis is a combination of your observations and analysis. Again, summarize your ideas for each point.

5 Research Paper Information

Continue: Outline



- Within the outline, identify the information that you will use, for the formal analysis or the contextual analysis, include the page(s) number.
- Identify the textbook, additional book(s) that you will use from MSJ library or OhioLinks.
- Identify the web sites you have found and the date accessed.

6

Research Paper Information

Writing Your Research Paper



- Don't wait until the last minute to write your paper. You may find that you need additional resources.
- Read the Guidelines for Writing an Art Essay posted on the class web site.
- Write your paper. Use the spell checker. Use the checklist as you read your paper again to be sure that you are meeting the highest standards.
- Email Ms. Rindsberg if you have questions. She'll respond in 24 hours.

7

Research Paper Information

Finding Your Artwork



- The next slides show some artworks that you might consider for your research paper.
- Some artworks are from the textbook and some are from web sites linked to our class web site.
- You can also check out the links to museums on the class web site.

8

Research Paper Information

Graphic Majors

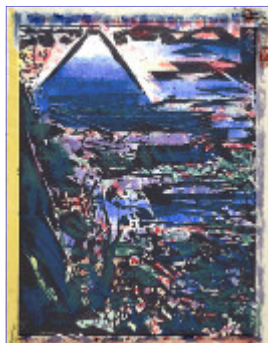


Ichikawa Danjuro VIII as Gongoro in Shibaraku
By Utagawa Kunisada, 1836
Website: Kunisada & Kabuki

9

Research Paper Information

Fine Arts Majors



Kanaya, from Tokaido
Munakata Hanga, 1964
By Munikata Shiko
Woodblock print
The British Museum

10

Research Paper Information

History Majors



The Heroic Commander Hirose-Gunshin
By Koto, 1904, Woodblock print
Web Site: Freer and Sackler Galleries

11

Research Paper Information

Math Majors



Yoyogi Stadium 1961 – 1964
By Kenzo Tange
Mason fig. 409

12

Research Paper Information

Textile Lovers



Flower Uchikake
Early 20th century
Yuzen dyed silk
Scan: Story of Kimono
Ms. Rindsberg's Library
& OhioLinks

13

Research Paper Information

Anime Fans

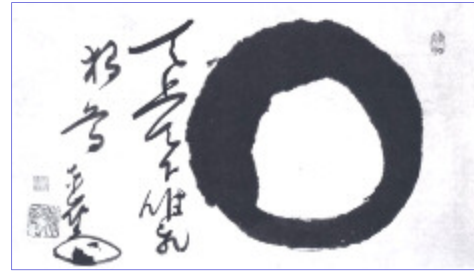


Still from *Millennium Actress*, 2002
Directed by Satoshi Kon, born 1963
Many Video Stores

14

Research Paper Information

Calligraphy



Enso by Torei Enji (1721 – 1792)
Ink on paper, W: 21 inches
Scan: Zenga and Nanga, Ms. Rindsberg's Library

15

Research Paper Information

Installation Art Lovers



Fear of Dots
Installation: The Mattress
Factory, Pittsburgh
By Kusama Yayoi
Web: Pittsburgh Chamber
of Commerce



16

Research Paper Information

Ceramics



Stone Plate, Unknown Artist
Scan: Mingei Japanese Folk Art
Ms. Rindsberg's Library

17

Research Paper Information

Economics and Finance

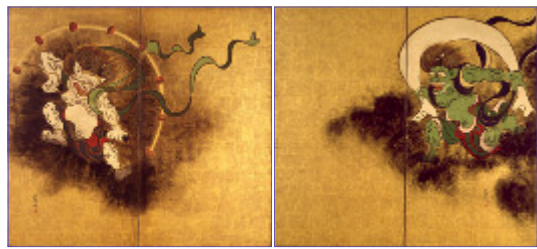


Nihonbashi (From the 53 Stations of the Tokaido)
By Ando Hiroshige, 1832
Minneapolis Institute of Art

18

Research Paper Information

Mythology Lovers

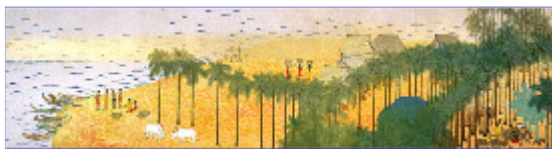


Raijin (Thunder God) and Fujin (Wind God)
By Ogata Korin H: 64 inches W: 71 inches
Website: Tokyo National Museum

19

Research Paper Information

Beach Lovers



Scenes in the Tropical Lands
By Imamura Shiko
Handscroll, color on paper, H: 18 inches
Mason fig. 436

20

Research Paper Information